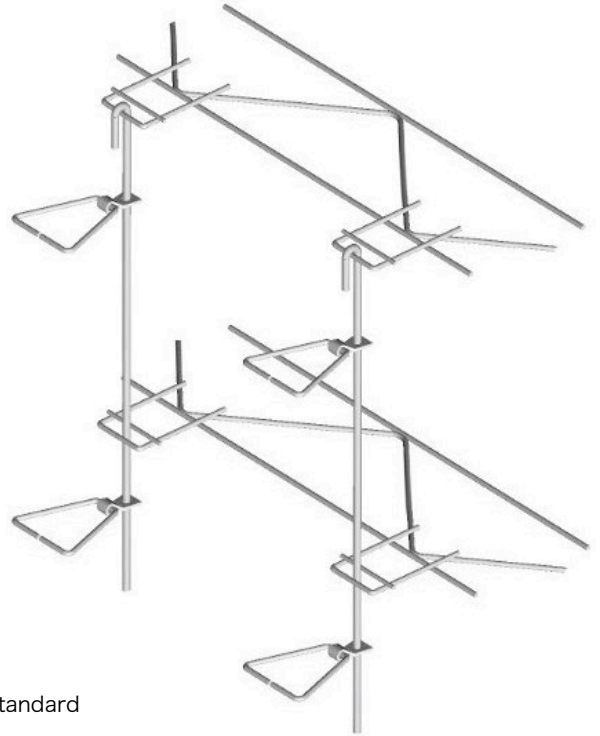
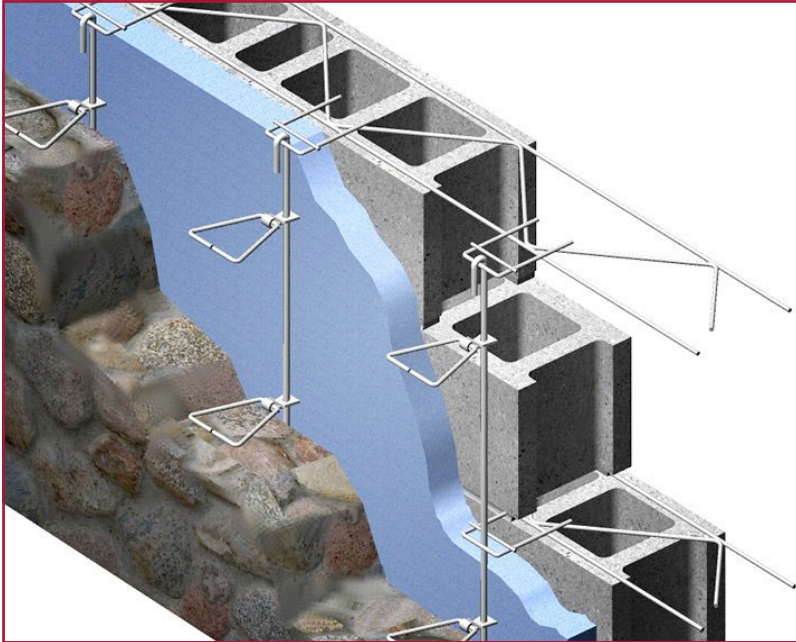


PRODUCT SUBMITTAL



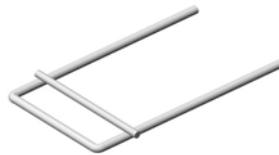
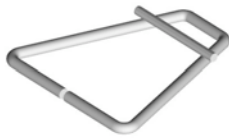
Stone Tab Truss



Dovetail Triangle

Lock bar Triangle

Tab / lock bar 3/16"Ø standard



MATERIAL CONFORMANCE

ASTM A82 / A82M - (Cold drawn steel wire)
 Tensile Strength - 80,000 psi
 Yield Point - 70,000 psi
ASTM A951 / A951M-06 - (Standard Specification for Steel Wire for Masonry Joint Reinforcement)
ACI / ASCE 530 - (Building code requirements for masonry structures)
 Hot Dip Galvanized after fabrication / Zinc Coating
ASTM A153 / A153M-B2 (1.50 oz per sq ft)
 Stainless Steel **ASTM 580 / ASTM 580M Type 304** (Type 316 available on special order)

Recycled Content:
 Mill Galvanized & Hot Dipped,
 82.8% Post-Consumer
 17% Post Industrial / Pre-Consumer,

Stainless Steel,
 J I % P I ^ E O [] • ~ { ^ !
 V O C Content - 0%



SIZES / FINISHES

Triangle available with lock bar or dovetail clip.

Triangle with lock bar	Dovetail triangle	3/16"Ø	1/4"Ø
3" x 3"	4" x 4"	5" x 5"	6" x 6"
7" x 9"	9" x 9"	Other _____	

Dowel:

3/8"Ø x 54"	1/4"Ø x 54"
-------------	-------------

FINISH:

Hot Dip Galvanized	Stainless Steel
--------------------	-----------------

WIRE SIZE:

	Side Rods	Cross Rods
Standard	9 Gauge (.148 in)	9 Gauge
Heavy Duty	3/16" (.187 in)	9 Gauge
Extra Heavy Duty	3/16" (.187 in)	3/16"

Corporate Office: 400 Rountree Rd Charlotte, NC 28217
 TEL: (800) 849-6722 FAX: (704) 525-3761

Mailing Address: P.O. Box 240988 Charlotte, NC 28224



www.wirebond.com

Memphis Plant: 2365 Harbor Ave. Memphis, TN 38113
 TEL: (800) 441-8359 FAX: (901) 775-9449

Mailing Address: P.O. Box 13124 Memphis, TN 38113