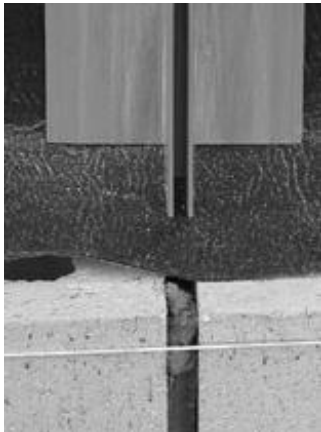


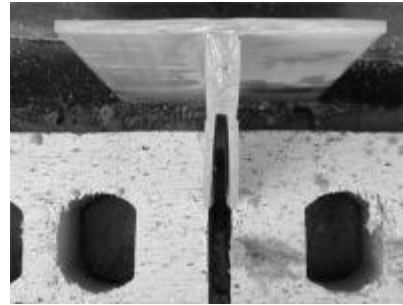
Plumbrite Installation Guide

WIRE-BOND



Step #1

Position The Plumb-Rite above the flashing, in a vertical position with the top of the "T" edge against the wall. Align the Plumb-Rite slot directly over the vertical head joint where expansion joint or backer rod is inserted for expansion purposes.



Note: Always position Plumb-Rite in back of brick in open slotted area to allow for expansion of brick.



Step #2

Depending on back-up; fasten Plumb-Rite to wall. Use screws or nails for steel-stud wall board applications. Walls with block and insulation will require Plumb-Rite Mastic.

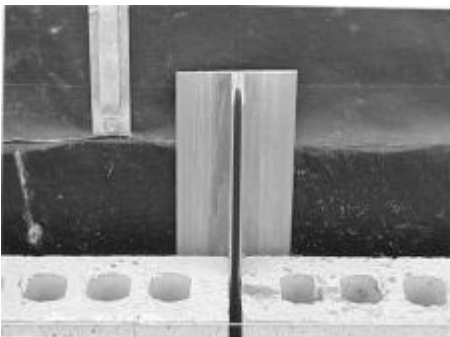


Step #3

Place a level against the Plumb-Rite to obtain the precise plumb position. Chalk mark the edge. Insert a second screw or mastic.

Step #4

Run the trowel up the vertical slot to ensure movement for expansion of the brick. It isn't necessary to clean out the joint.



That's all there is to it! Once Plumb-Rite is installed, there's no need to plumb the joint again.

Corporate Office
400 Roundtree Road
PO Box 240988
Charlotte, NC 28224
704 525.5554
800 849.6722
fax 704 525.3761



Memphis Plant
2365 Harbor Avenue
PO Box 13124
Memphis, TN 38113
901 775.9444
800 441.8359
fax 901 775.9449

www.wirebond.com