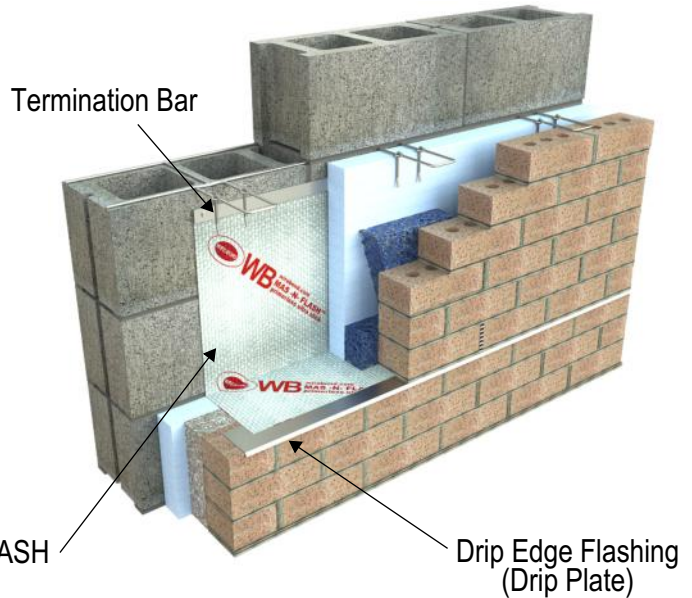


# PRODUCT SUBMITTAL

**WIRE-BOND**

## 4193 MAS-N-FLASH S.A. Self-Adhering 40 Mil Flashing



**Note: A Termination Bar is required for surface-mounted applications.**

### Description:

Mas-N-Flash 40-mil woven coated flashing is a specially designed non-asphaltic, composite membrane with a custom formulated high content Butyl adhesive. The woven coated poly-ethylene base sheet exhibits excellent flexibility, puncture resistance, and tensile / tear strength in both web direction and cross direction. This product is ideal for application to concrete, gypsum, masonry, polystyrene, steel, and wood.

**QUICK SET sealant should be used for all laps and joints.**

### Technical Data:

Property	Avg. Values	Test Method
Tensile Strength	5,230 psi	ASTM D412
Elongation	20 %	ASTM D412
Water Absorption	1.48 %	ASTM E 96
Low Temperature Flexibility	No Cracks	ASTM C765
Water Vapor Transmission	.011 perms	ASTM D751
Mullen Burst	400 psi	ASTM D751

The information presented in this data sheet is believed to be accurate and is not intended to constitute a specification. The values given reflect average measurements, which can vary slightly. Users are encouraged to determine the suitability of this product for their own particular application(s).

### Features and Benefits

- Non-Asphaltic
- UV Resistant up to 120 days
- Color : White
- Aggressive Peel & Stick Technology
- Forms Laps and Corners easily
- Split release liner for easy application
- Seals around properly installed fasteners
- With a softening point in excess of 260F, and an asphalt free chemistry MAS-N-FLASH will not drool when exposed to high temperatures.
- No Primer needed
- No VOC's, HFCC's, nor CFC's
- Tear and slice resistant

### MAS-N-FLASH S.A. - Primerless

Width:  12"  18"  24" (75 lf / rolls)

### Accessories:

#4198 Quick Set Sealant - 28 oz. cartridge (**Required**)

### Termination Bar (Required):

#4200 Stainless Steel  #4200 PVC

#4210 Stainless Steel with Flange Top for Sealant

### Corners & End Dams: Finish: Stainless Steel

#4194 End Dam  #4196 Inside Corner  #4196 Outside Corner

### Drip Edge Plate Flashing (Recommended): Finish: Stainless Steel

Size:  3" width  1-1/2" width  #4165 Drip Edge Flashing (8'-0" Length)

#4166 Inside Drip Edge Corner  #4166 Outside Drip Edge Corner

### Weep & Vents: #3601 Cell Vent #3603 Clear Rectangular Vent

#3602 Louvered Weepole

### Mortar Suspension: #3611D Cavity Net DT 1" #3611D Cavity Net DT 2"

**Corporate Office:** 400 Rountree Rd Charlotte, NC 28217  
TEL: (800) 849-6722 FAX: (704) 525-3761

**Mailing Address:** P.O. Box 240988 Charlotte, NC 28224

**WIRE-BOND**

**Memphis Plant:** 2365 Harbor Ave. Memphis, TN 38113  
TEL: (800) 441-8359 FAX: (901) 775-9449

**Mailing Address:** P.O. Box 13124 Memphis, TN 38113

[www.wirebond.com](http://www.wirebond.com)