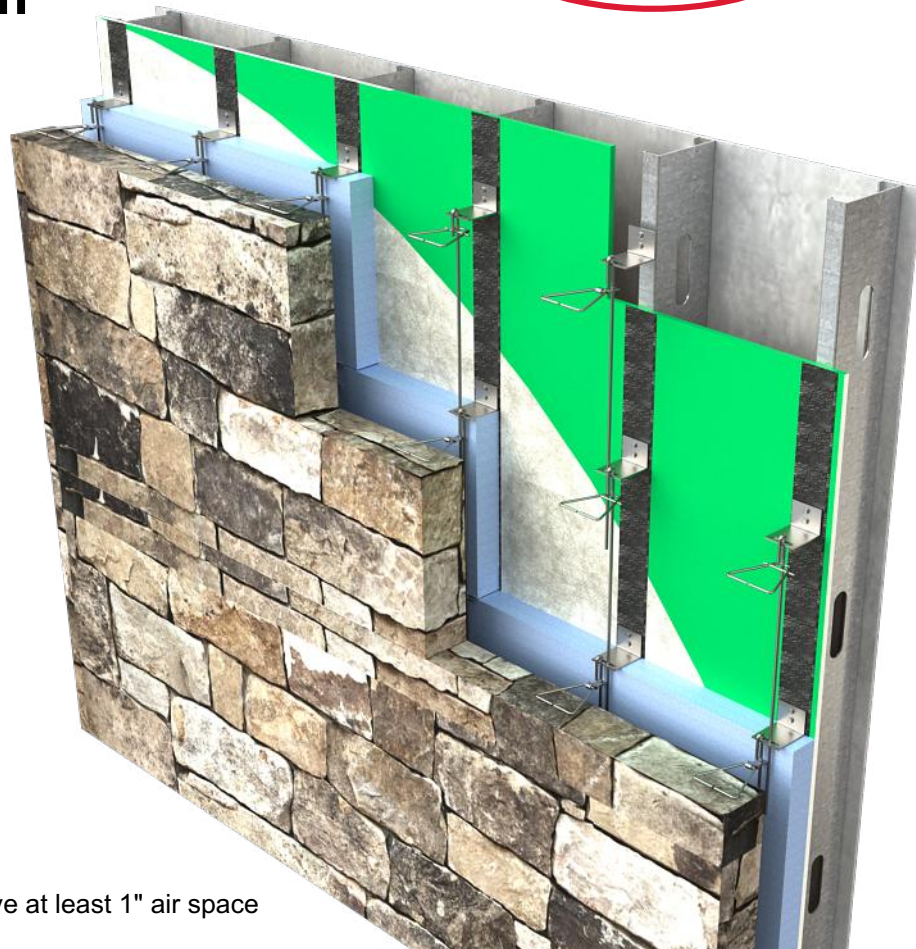
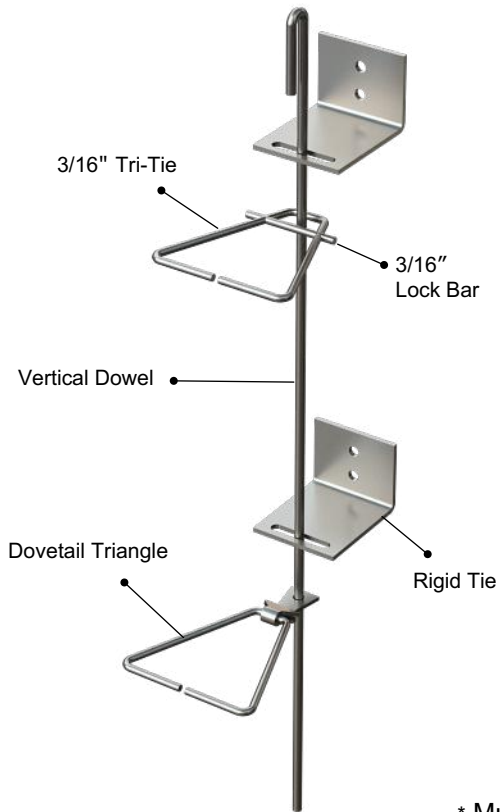


# PRODUCT SUBMITTAL

WIRE-BOND

## Stone Anchor System



\* Must have at least 1" air space

### MATERIAL CONFORMANCE

Wire (Carbon Steel): Prefabricated from cold-drawn steel wire conforming to **ASTM A1064/A1064M, ASTM A82/ A82M**

Sheet Metal - (Carbon Steel) **ASTM A1008 / A1008M**

Sheet Metal (Stainless Steel):  
**ASTM A666, ASTM A480/480M, and ASTM A240/A240M**  
**AISI Type 304 or 316**

Hot Dip Galvanized after fabrication / Zinc Coating  
**ASTM A153 / A153M-B2 (1.50 oz per sq ft)**



Vertical Dowel:  
(Carbon Steel):**ASTM A36/A36M**

Vertical Dowel: (Stainless Steel):  
**ASTM A276 - AISI Type 304 or 316**

**Recycled Content:**  
Hot Dip Galvanized  
82.8% Post-Consumer  
17% Post Industrial /  
Pre-Consumer,

Stainless Steel,  
60% Post Consumer  
V O C Content - 0%

### SIZES / FINISHES

#### Rigid Tie:

12 gauge x 2-1/2" wide

Finish: Hot Dip Type 304 Stainless Steel

#### Insulation Thickness:

0" 1" 1-1/2" 2" 2-1/2" 3"

**Dowel Diameter:** 3/8" Dia. Standard

**Dowel Length :** 20" 54"

Finish: Hot Dip Type 304 Stainless Steel

**Tri-Tie 3/16" Diameter**      Dovetail Triangle      Lockbar Triangle

**Size:**                                      3"      4"      5"      6"      7"

**Finish:**                                      Hot Dip                                      Type 304 Stainless Steel

**Corporate Office:** 400 Rountree Rd Charlotte, NC 28217  
TEL: (800) 849-6722 FAX: (704) 525-3761

**Mailing Address:** P.O. Box 240988 Charlotte, NC 28224



[www.wirebond.com](http://www.wirebond.com)

**Memphis Plant:** 2365 Harbor Ave. Memphis, TN 38113  
TEL: (800) 441-8359 FAX: (901) 775-9449

**Mailing Address:** P.O. Box 13124 Memphis, TN 38113