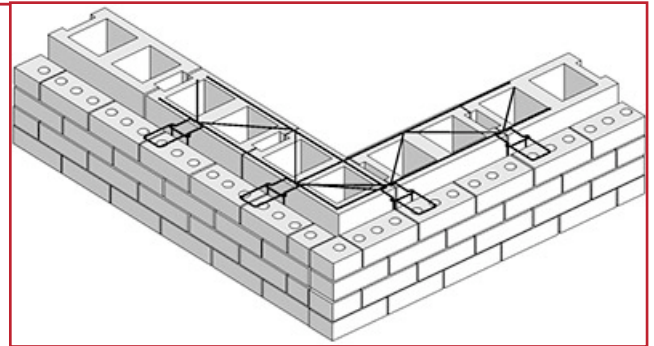
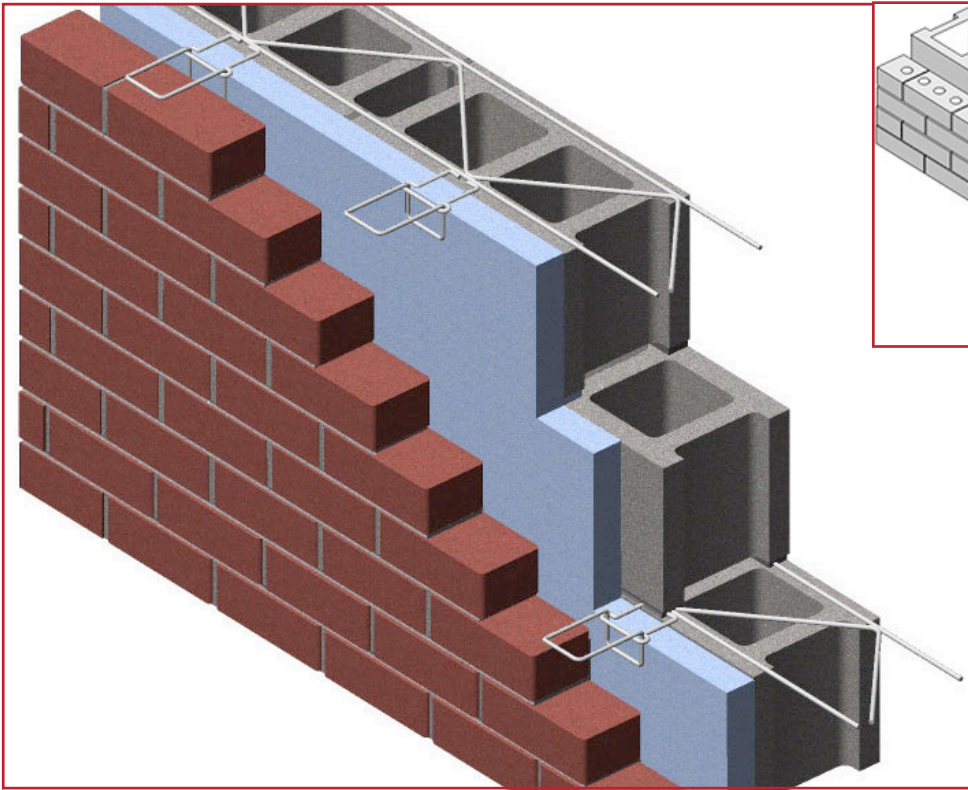


# PRODUCT SUBMITTAL

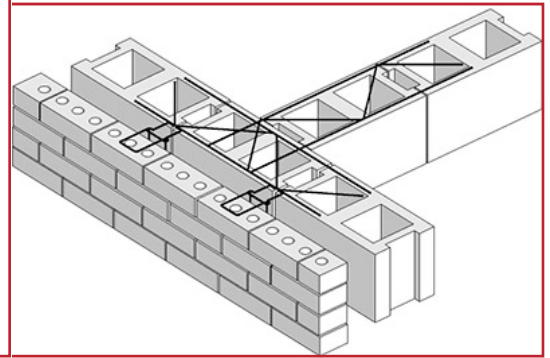


**WIRE-BOND**

## Series 700 Truss Adjustable Tab



PREFABRICATED CORNER



PREFABRICATED TEE

Cross rods welded 16" O.C.



3/16" dia. Tab & Wall Tie

- Tab is butt welded to side rod 16" O.C.
- Height of tab will not exceed 3/16" in bed joint.
- Easier to maintain 3/8" mortar joint.

### MATERIAL CONFORMANCE

**ASTM A82 / A82M** - (Cold drawn steel wire)  
Tensile Strength - 80,000 psi  
Yield Point - 70,000 psi  
**ASTM A951 / A951M-06** - (Standard Specification for Steel Wire for Masonry Joint Reinforcement)  
**ACI / ASCE 530** - (Building code requirements for masonry structures)  
Mill Galvanized / Zinc Coating: **ASTM A641 / A641M (0.10 oz per sq ft)**  
Hot Dip Galvanized after fabrication / Zinc Coating  
**ASTM A153 / A153M-B2 (1.50 oz per sq ft)**  
Stainless Steel **ASTM 580 / ASTM 580M Type 304** (Type 316 available on special order)

**Recycled Content:**  
Mill Galvanized & Hot Dipped,  
82.8% Post-Consumer  
17% Post Industrial / Pre-Consumer,

Stainless Steel,  
J1 % P1 AED [ ] • { ^ ;  
V O C Content - 0%



### SIZES / FINISHES

Mill Galvanized / Zinc Coating: **ASTM A641 / A641M (0.10 oz per sq ft)**  
Hot Dip Galvanized after fabrication / Zinc Coating  
**ASTM A153 / A 153 - B2 (1.50 oz per sq ft)**  
Stainless Steel **ASTM 580 / ASTM 580M Type 304** (Type 316 available on special order)

WIRE SIZE:	Side Rods	Cross Rods
Standard	9 Gauge (.148 in)	9 Gauge
Heavy Duty	3/16" (.187 in)	9 Gauge
Extra Heavy Duty	3/16" (.187 in)	3/16"

**Corporate Office:** 400 Rountree Rd Charlotte, NC 28217  
TEL: (800) 849-6722 FAX: (704) 525-3761

**Mailing Address:** P.O. Box 240988 Charlotte, NC 28224



[www.wirebond.com](http://www.wirebond.com)

**Memphis Plant:** 2365 Harbor Ave. Memphis, TN 38113  
TEL: (800) 441-8359 FAX: (901) 775-9449

**Mailing Address:** P.O. Box 13124 Memphis, TN 38113