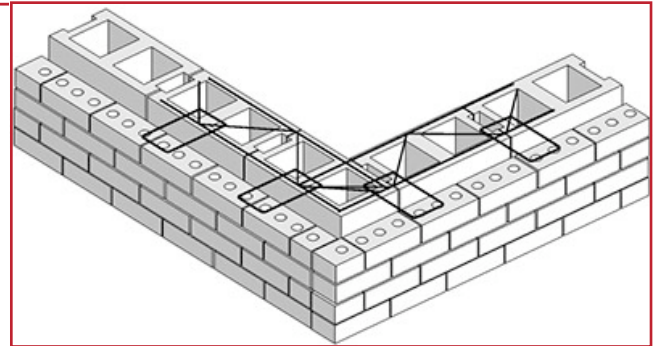
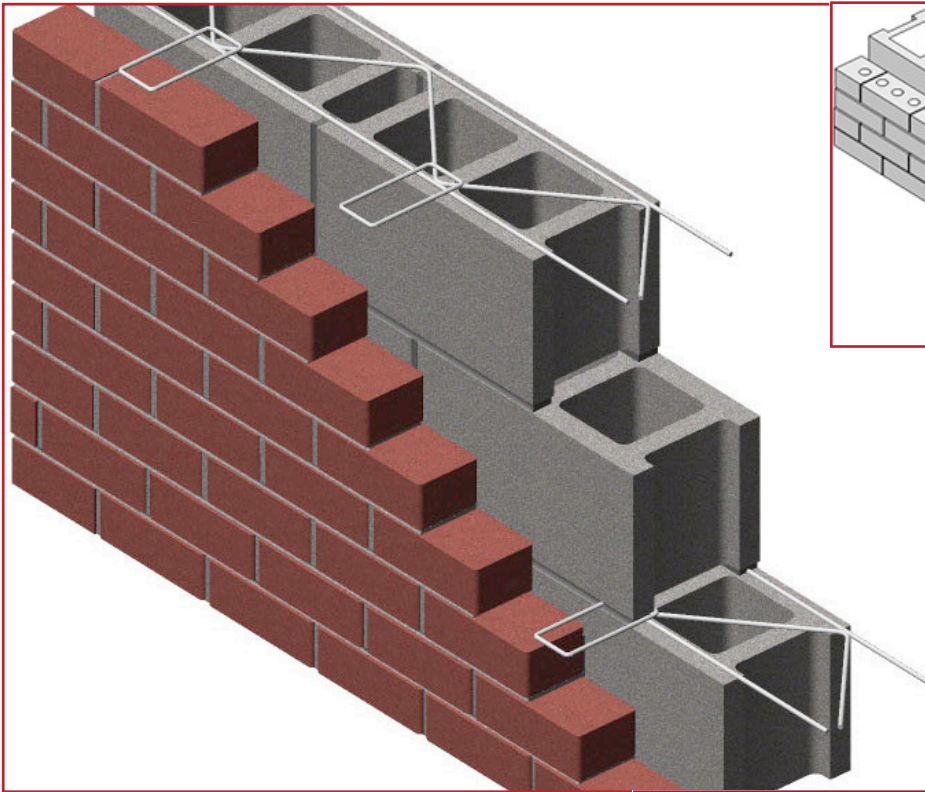


PRODUCT SUBMITTAL

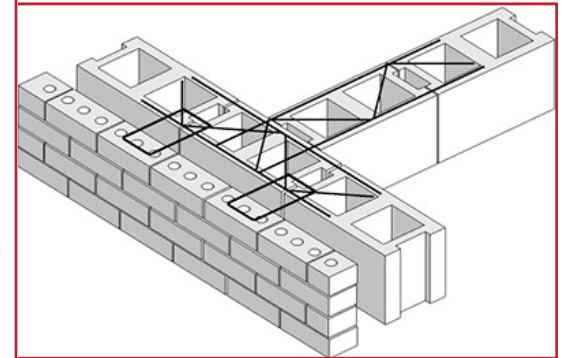


WIRE-BOND

Series 500 Truss Fixed Tab



PREFABRICATED CORNER



PREFABRICATED TEE

Cross rods welded 16" O.C.

- Wall Tie is welded 16" O.C.
- 4 point weld.



3/16" dia. Wall Tie

MATERIAL CONFORMANCE

ASTM A82 / A82M - (Cold drawn steel wire)
Tensile Strength - 80,000 psi
Yield Point - 70,000 psi
ASTM A951 / A951M-06 - (Standard Specification for Steel Wire for Masonry Joint Reinforcement)
ACI / ASCE 530 - (Building code requirements for masonry structures
Mill Galvanized / Zinc Coating: **ASTM A641 / A641M (0.10 oz per sq ft)**
Hot Dip Galvanized after fabrication / Zinc Coating
ASTM A153 / A153M-B2 (1.50 oz per sq ft)
Stainless Steel **ASTM 580 / ASTM 580M Type 304** (Type 316 available on special order)

Recycled Content:
Mill Galvanized & Hot Dipped,
82.8% Post-Consumer
17% Post Industrial / Pre-Consumer,

Stainless Steel,
100% Recycled
VOC Content - 0%



SIZES / FINISHES

Mill Galvanized / Zinc Coating: **ASTM A641 / A641M (0.10 oz per sq ft)**
Hot Dip Galvanized after fabrication / Zinc Coating
ASTM A153 / A153M-B2 (1.50 oz per sq ft)
Stainless Steel **ASTM 580 / ASTM 580M Type 304** (Type 316 available on special order)

WIRE SIZE:	Side Rods	Cross Rods
Standard	9 Gauge (.148 in)	9 Gauge
Heavy Duty	3/16" (.187 in)	9 Gauge
Extra Heavy Duty	3/16" (.187 in)	3/16"

Corporate Office: 400 Rountree Rd Charlotte, NC 28217
TEL: (800) 849-6722 FAX: (704) 525-3761

Mailing Address: P.O. Box 240988 Charlotte, NC 28224



www.wirebond.com

Memphis Plant: 2365 Harbor Ave. Memphis, TN 38113
TEL: (800) 441-8359 FAX: (901) 775-9449

Mailing Address: P.O. Box 13124 Memphis, TN 38113