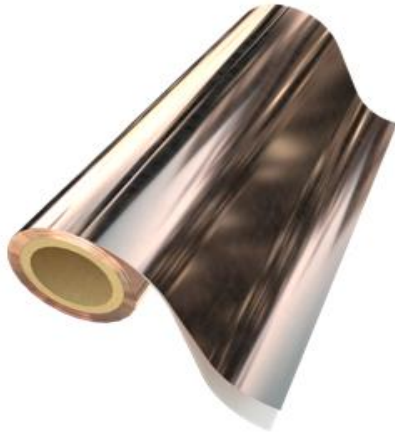


PRODUCT SUBMITTAL

WIRE-BOND

4155 COPPERFLASH S.A. Self-Adhering 3oz. Copper Flashing



Termination Bar

COPPERFLASH S.A.

Drip Edge Flashing
(Drip Plate)

Note: A Termination Bar is required for surface-mounted applications.

Description:

COPPERFLASH S.A. is a self-adhering composite flexible flashing consisting of a prime solid sheet of copper. The solid sheet of copper is coated with a film on one side and with the other side bonded to a permanent clear (PSA) adhesive with a removable silicone coated release liner. By completely encapsulating the copper in film and adhesive, the copper is protected from any acid or alkalis degradation. This particular composition of COPPERFLASH eliminates not only areas of non-adhesion but enhances the longevity and waterproofing characteristics of the flashing. COPPERFLASH can be applied from 20-180 degrees Fahrenheit with no primer.

QUICK SET sealant should be used for all laps and joints.



Technical Data:

Property	Avg. Values	Test Method
Puncture	1,540 psi	ASTM E154
Tensile Strength	31,500 psi	ASTM D882
Nail Seal-ability-AMMA	pass	ASTM D1970
Mold Resistance	pass	ASTM 3273
Adhesion	20 lbs. / psi	PSTC 1.1

Features and Benefits

- 3 oz. Copper
- Permanent Adhesive- asphalt free
- U.V. Resistant up to 180 days
- Mold Resistant
- High Puncture and Tear Resistance
- Flexible in extreme cold and heat
- High temperature stability
- Flexible for easy jobsite formation
- Life of the wall warranty
- LEED – EA credit 1 and EQ credit 4.1

COPPERFLASH S.A. will bond to concrete, CMU, brick, plywood, exterior gypsum, OSB, metal and air barriers. COPPERFLASH S.A. is compatible with most of the insulations, air barriers, roofing membranes, asphaltic flashings and below grade waterproofing products.

COPPERFLASH S.A.

Width: 12" 18" 24" (50 lf rolls)

Accessories:

- #4198 Quick Set Sealant - 28 oz. cartridge (**Required**)
- #4161W Bond -N- Flash Primer (Water Based) - 5 gallon pail
- #4161S Bond -N- Flash Primer Solvent Based (Winter Grade) - 5 gallon pail

Termination Bar (Required):

- #4200 Stainless Steel #4200 PVC
- #4210 Stainless Steel with Flange Top for Sealant

Corners & End Dams: Finish: Stainless Steel Copper

- #4194 End Dam #4196 Inside Corner #4196 Outside Corner

Drip Edge Plate Flashing: Finish: Stainless Steel Copper

Size: 3" width 1-1/2" width #4165 Drip Edge Flashing (8'-0" Length)

- #4166 Inside Drip Edge Corner #4166 Outside Drip Edge Corner

Weep & Vents: #3601 Cell Vent #3603 Clear Rectangular Vent

- #3602 Louvered Weephole

Mortar Suspension: #3611D Cavity Net DT 1" #3611D Cavity Net DT 2"

Corporate Office: 400 Rountree Rd Charlotte, NC 28217
TEL: (800) 849-6722 FAX: (704) 525-3761

Mailing Address: P.O. Box 240988 Charlotte, NC 2822



www.wirebond.com

Memphis Plant: 2365 Harbor Ave. Memphis, TN 38113
TEL: (800) 441-8359 FAX: (901) 775-9449

Mailing Address: P.O. Box 13124 Memphis, TN 38113