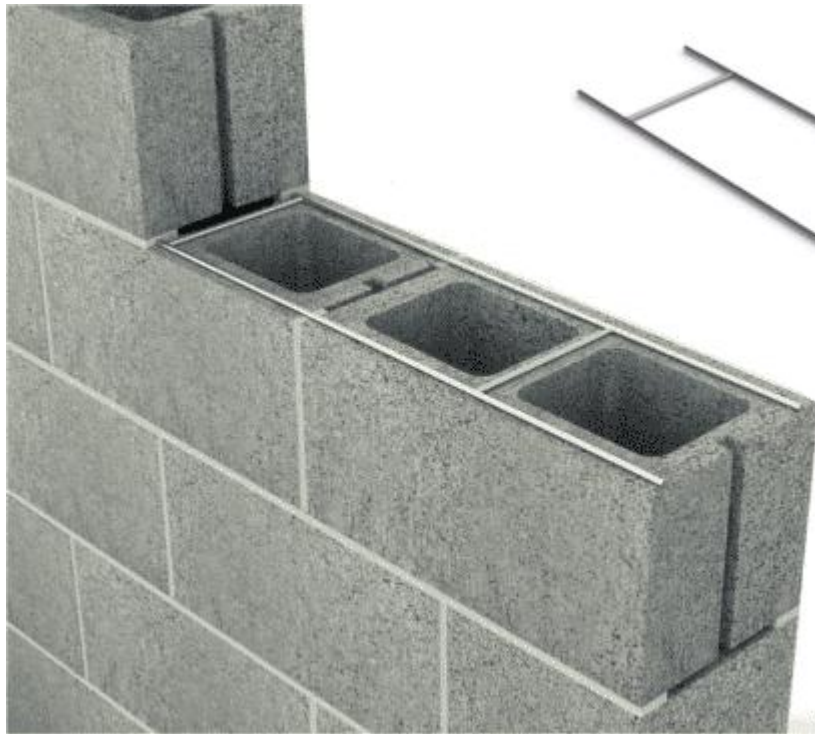


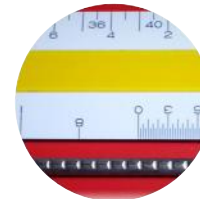
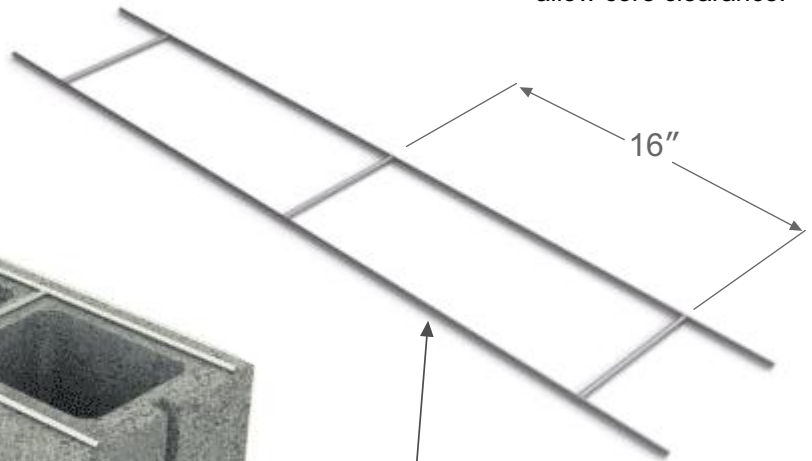
PRODUCT SUBMITTAL

WIRE-BOND

Series 200 Ladder Mesh (For Single Wythe Wall)



16" O.C. cross rods allow core clearance.



ASTM A 951
Deformations
8 sets/inch

MATERIAL CONFORMANCE	SIZES / FINISHES						
<p>Wire (Carbon Steel): Prefabricated from cold-drawn steel wire conforming to ASTM A1064/A1064M, ASTM A82/ A82M</p> <p>Tensile Strength - 80,000 p.s.i. Yield Point - 70,000 p.s.i. minimum</p> <p>ASTM A951/A951M (Standard Specification for Steel Wire for Masonry Joint Reinforcement)</p> <p>ACI / ASCE 530 (Building Code Requirements for Masonry Structures)</p> <p>Mill Galvanized coating: ASTM A641/A641M (0.1 oz/ft)</p> <p>Hot-Dip Galvanized after fabrication: ASTM A153/A153M-B2 (1.5 oz/ft)</p> <p>Wire (Stainless Steel): ASTM A580/ASTM 580M - AISI Type 304 (Type 316 available on special orders)</p>	<p>WIRE SIZE:</p> <p>Standard 9 Gauge (.148 in)</p> <p>Heavy Duty 3/16 (.187 in)</p> <p>Extra Heavy Duty 3/16 (.187 in)</p>			<p>SIDE RODS:</p> <p>9 Gauge (.148 in)</p> <p>3/16 (.187 in)</p> <p>3/16 (.187 in)</p>		<p>CROSS RODS:</p> <p>9 Gauge</p> <p>9 Gauge</p> <p>3/16</p>	
<p>Recycled Content: Mill Galvanized & Fot Dipped, 82.8% Post-Consumer 17% Post Industrial / Pre Consumer</p> <p>Stainless Steel 97% Pre-Consumer V O C Content - 0%</p>	<p>10' length standard, custom length available special order)</p> <p>CMU SIZE:</p> <p>4" 6" 8" 10" 12" 14" 16"</p> <p>FINISHES:</p> <p>Mill Galvanized Hot Dip Galvanized Stainless Steel</p>						

Corporate Office: 400 Rountree Rd Charlotte, NC 28217
TEL: (800) 849-6722 FAX: (704) 525-3761

Mailing Address: P.O. Box 240988 Charlotte, NC 28224



www.wirebond.com

Memphis Plant: 2365 Harbor Ave. Memphis, TN 38113
TEL: (800) 441-8359 FAX: (901) 775-9449

Mailing Address: P.O. Box 13124 Memphis, TN 38113