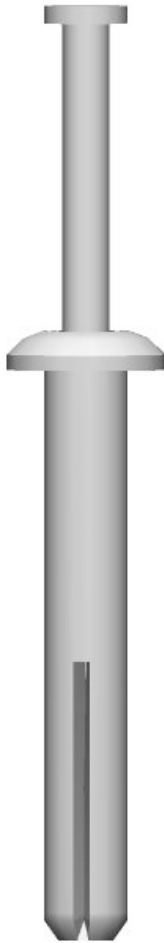


PRODUCT SUBMITTAL



Zamac Nail-In Hit Anchor



DESCRIPTION / INSTALLATION

The Zamac nail-in or Hammer Drive Anchor is a nail drive anchor which has a body formed from Zamac alloy. Nail-In has a low profile mushroom head style. Allows for fast and easy installation. The anchor can be used in concrete, block, brick, or stone and is tamper and corrosive resistant.

To determine the length of metal hit anchors needed, simply add the thickness of the material to be fastened to the minimum embedment. Most metal hit anchors can withstand concrete shear levels up to 884.

INSTALLATION:

Note: During installation that hole size is equal to anchor diameter. Nail-In can be installed in a number of base materials including concrete, brick, and block. Nail-In performs best when used in light-duty dead loads and is not recommended for use in overhead applications.

- 1) Drill hole using carbide tipped bit. Drill hole 1/4" deeper than expected embedment depth.
- 2) Clean hole of debris.
- 3) Insert Nail-In through fixture in to hole in base material.
- 4) Using a hammer hit the nail into anchor until head is flush with top of anchor.

SIZES / FINISHES

Sizes:

- 1/4" x 1" 1/4" x 1-1/4" 1/4" x 1-1/2" 1/4" x 2"

Finishes:

- Zinc Alloy Stainless Steel



Corporate Office: 400 Roundtree Rd Charlotte, NC 28217
TEL: (800) 849-6722 FAX: (704) 525-3761

Mailing Address: P.O. Box 240988 Charlotte, NC 28224



www.wirebond.com

Memphis Plant: 2365 Harbor Ave. Memphis, TN 38113
TEL: (800) 441-8359 FAX: (901) 775-9449

Mailing Address: P.O. Box 13124 Memphis, TN 38113